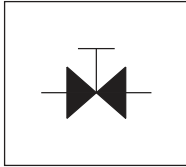


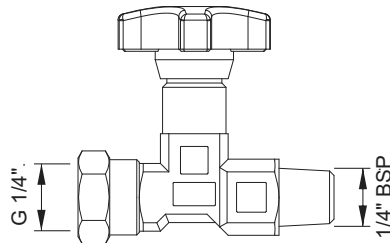
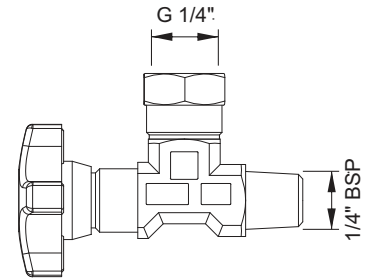
ES

Valvola di esclusione manometro
Pressure gauge isolator

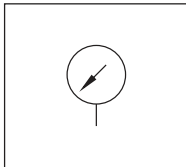
70

Caratteristiche principali
main features

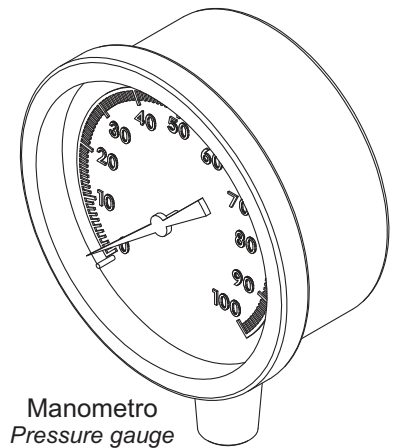
Temp. di impiego working temperature	-20°C+100°C
Connessioni connections	G1/4"
Pressione max max pressure	400 bar

Esclusore manometro attacco in linea
Pressure gauge isolator in-line connectionVersione con connessioni F-F a richiesta
F-F connection version on requestEsclusore manometro attacco 90°
Pressure gauge isolator 90° connection

9022

Manometro
Pressure gaugeCaratteristiche principali
main features

Connessione connection	G1/4"
Diametro nominale nominal diameter	63 mm
Classe di protezione protection class	1,6
Grado di protezione protection degree	IP 65
cod. code	Scala scale
90220310	0 - 60 bar
90220400	0 - 100 bar
90220580	0 - 160 bar
90220660	0 - 250 bar

Manometro
Pressure gaugeEsclusore manometro
pressure gauge isolator

Codici ordinazione - ordering codes

E	S	2	9	0	0
1	2	3			

1 Esclusore - isolator

ES

2 Tipo - type

290 = Connessione in linea - in-line connection
291 = Connessione 90° - 90° connection

3 Serie - series

0 = Standard

9	0	2	2	0	4	0	0
1	2	3					

1 Manometro - gauge

9022

2 Scala - scale

031 = da 0 a 60 bar - from 0 to 60 bar
040 = da 0 a 100 bar - from 0 to 100 bar
058 = da 0 a 160 bar - from 0 to 160 bar
066 = da 0 a 250 bar - from 0 to 250 bar

3 Serie - series

0 = Standard